

# Kadee®

ACCURATE MARKINGS!  
INCREDIBLE DETAIL!  
TRUE TO PROTOTYPE!  
SMOOTH TRACKING! FREE ROLLING!

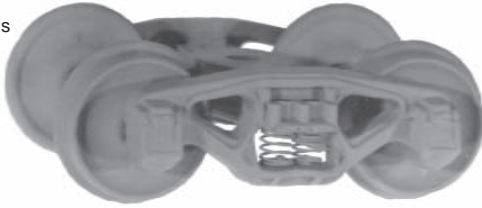


All Kadee® Self-Centering trucks have the same features that our original trucks have, but with one new addition the same patented (patent #5,090,332) Self-Centering feature as found on Kadee®'s PS-1 line of cars.

**#550 Bettendorf (Self-Centering)**

**#500 Bettendorf**

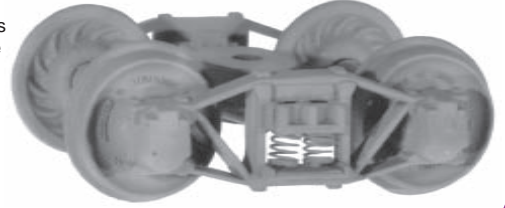
33" smooth back wheels used interchangeably from the 1930's to 1993



**#551 Arch Bar (Self-Centering)**

**#501 Arch Bar**

33" ribbed back wheels used from the turn of the century to about 1941



**#552 ASF® A-3 Ride-Control® 50-Ton (Self-Centering)**

**#504 ASF® A-3 Ride-Control® 50-Ton**

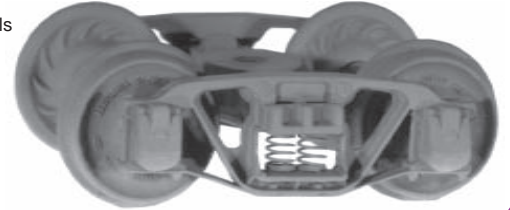
50-ton Freight Trucks  
33" smooth back wheels used from 1940 to 1994 with snap on brake rigging



**#553 Andrews (Self-Centering)**

**#509 Andrews**

33" ribbed back wheels used from the turn of the century to the late 1950's



**#554 Bettendorf T-Section (Self-Centering)**

**#511 Bettendorf T-Section**

33" ribbed back wheels used from the 1920's into the 1950's



**#555 ASF® Roller Bearing 100-Ton (Self-Centering)**

**#513 ASF® Roller Bearing 100-Ton**

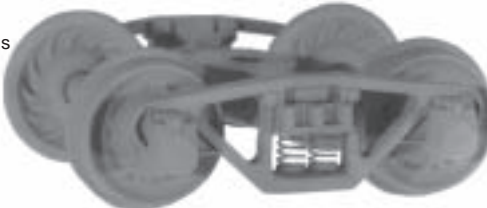
36" smooth back wheels used from the diesel era to the present. With snap on brake rigging



**#556 Vulcan (Self-Centering)**

**#515 Vulcan**

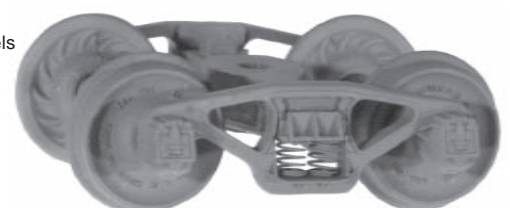
33" ribbed back wheels used from the 1920's to the end of the steam era



**#557 Pennsy 2D-F8 50-Ton (Self-Centering)**

**#517 Pennsy 2D-F8 50-Ton**

33" ribbed back wheels used from the 1930's into the 1980's



**#558 Barber® S-2 Roller Bearing 70-Ton (Self-Centering)**

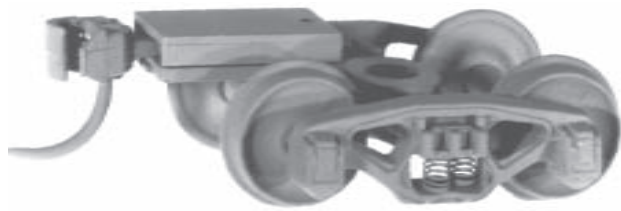
**#518 Barber® S-2 Roller Bearing 70-Ton**

33" smooth back wheels used on almost any 70 ton freight built before 1970, and is still in use. With snap on brake rigging & shoes

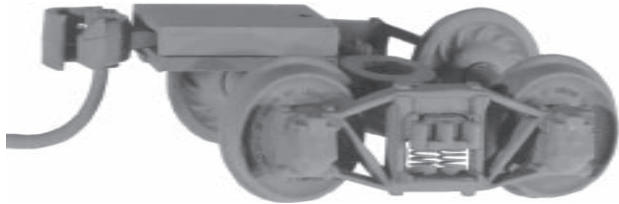


Kadee® Trucks are world renowned for their fidelity to the prototype and scale proportioning. Our trucks are manufactured to the most exacting standards and are state-of-the art in model railroad scale reproductions of actual trucks. Non-magnetic metal wheels put weight where it is needed most and lend to a realistic sound and appearance. Insulated axles with needle points make for trouble free smooth rolling. Sprung highly flexible trucks with metal side frames and bolsters add to the superior tracking and rolling characteristics, provide low center of gravity and weight to aid in true-to-life unflinching performance of your rolling stock. Kadee's® "Self-Centering" trucks (Patent #5,090,332). When you pick up the car and hold it level and upright, the trucks swing and align themselves along the long axis of the car. This makes it easier to put the car on the track.

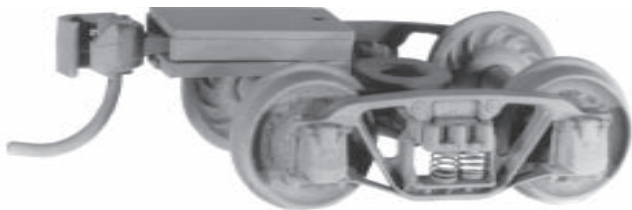
# FREIGHT TRUCKS and WHEEL SETS



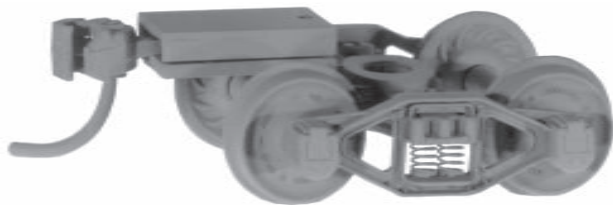
#502 Bettendorf with ready-to-mount coupler



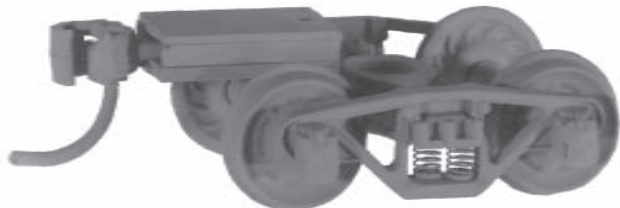
#503 Arch Bar with ready-to-mount coupler



#510 Andrews with ready-to-mount coupler



#512 Bettendorf T-Section with ready-to-mount coupler



#516 Vulcan with ready-to-mount coupler



# 716 HO scale Arch Bar 3'-7" Wheel Center



# 717 HO scale Arch Bar 4'-6" Wheel Center

## HO scale TRUCKS

Smooth rolling, sprung and equalized, Detailed

## FREIGHT CAR WHEEL SETS

28" 33" 36"

#520  
33" Smooth Back  
12 pair \$



#523  
33" Ribbed Back  
12 pair



#524  
28" Smooth Back  
12 pair



## PASSENGER CAR WHEEL SETS

PASSENGER #521  
36" Ribbed Back  
12 pair



#522 FREIGHT and PASSENGER  
36" Smooth Back  
12 pair



Kadee's® Wheel Sets are prototypical, smooth running, free rolling, and non-magnetic. RP-25 wheel contour assures great tracking. Ribbed Back Wheel Sets include fine lettering of the founders data. Kadee's Wheel Sets are offered in both freight and passenger types with smooth or ribbed back styles to fit the era of your rolling stock!